

# CERTIFICATE OF LOCATION OF GOVERNMENT CORNER

EAST QUARTER Corner of Section 31, Township 105, Range 43, 5TH P.M.

STATE OF MINNESOTA, County of MURRAY

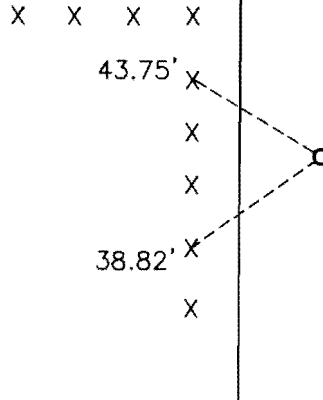
At the corner location shown on the sketch:

On \_\_\_\_\_ found a \_\_\_\_\_  
DATE

left monument as found,  lowered monument,  removed monument (explain)

On 07-25-2007 placed a 1" IRON PIPE WITH SEAL #43844  
DATE

### SKETCH OF REFERENCE TIES

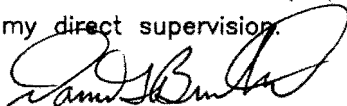


Minnesota State Plane Coordinate  
System Murray County Datum  
NAD83 (1996)

N: 103185.661  
E: 426725.595

Statement of evidence relative to this corner location is on back of page.

I hereby certify that this document and the data contained herein was prepared by me or under my direct supervision.

  
SIGNATURE

Feb. 20, 2008  
DATE

Registration No. 43844

- Land Surveyor,  Professional Engineer
- County Surveyor,  County Engineer

OFFICE OF THE COUNTY RECORDER

County of \_\_\_\_\_

I hereby certify that this document was filed in the Co. Recorders office at \_\_\_\_\_ .M on the \_\_\_\_\_ day of \_\_\_\_\_ A.D. 20 \_\_\_\_\_

County Recorder \_\_\_\_\_

By \_\_\_\_\_, Deputy

DOCUMENT NO. \_\_\_\_\_

## Statement of Evidence

In September 1866, J. W. Bishop did the original subdivision of the township.

On July 25, 2007, Bueltel-Moseng Land Surveying set a survey spike with seal #43844 by projecting the E  $\frac{1}{4}$  of 32-105-43 through the corner fence post at the 1/16th corner and the corner fence post at the center of the section to this corner. The point fell midway between the NE corner and the SE corner of Section 31-105-43.